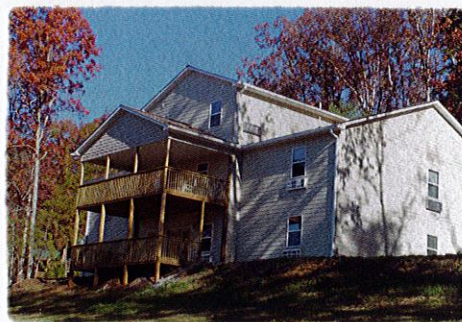
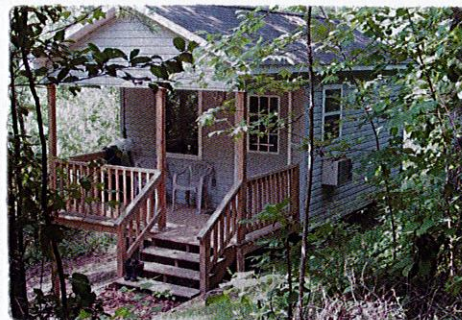




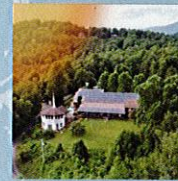
LODGING

Hinton can accommodate individuals, families, and groups of all sizes, with meals in our Dining Room available for groups of 10+. Lodging options include one-room Hermitage cabins and apartments for individuals and couples, cottages for small groups, retreat houses for large groups, and rooms in our Lodge. Bed linens and towels are provided. Kitchens are stocked with basic cooking equipment and dining supplies; most retreat houses have washers and dryers. While on our campus, you can enjoy...

- Scenic Views
- Porches, Rocking Chairs
- Trails, Meditation Gardens
- Fire Pits, Picnic Tables, Grills
- Lodge Hospitality Room
- Market & Gift Shop
- Lakeside Area with Dock
- Kayaks, Canoes, Noodles
- Disc Golf
- Balls, Board Games, Corn Hole



RATES



Young Commons	\$200-\$400
Moore Great Hall	\$200-\$400
Lakeside Pavilion	Up to \$400
Chapel	Up to \$400
Labyrinth	\$200-\$400
Tool Barn	\$200-\$400

EVENTS:

Rates for weddings are, \$600 to \$800. Pricing for receptions, reunions, dinners, and other events are based on set-up and clean-up needs.

MEALS:

½ price for ages 5-10; under 5 free

Breakfast	\$13/person
Continental Breakfast	\$8.50/person
Lunch	\$16/person
Dinner	\$18/person

LODGING:

FACILITY	NIGHTLY RATE	BRs	Occ.
Hermitage Cabins	\$100	1	2
Ponders' Porch	\$185	2	4
Lodge Rooms	\$90	17	2-6
Sells Cottage	\$320	4	10
Patterson Cottage	\$230	5	20
Catamount Cottage	\$215	3	9
Upper	\$115	2	6
Lower	\$100	1	3
Johnson Retreat House	\$835	15	30
Ervin Retreat House	\$835	11	32
1-BR Apt	\$100	1	2
2-BR Suite	\$145	2	5
Gentry Building			
1-BR Apt B	\$100	1	2
2-BR Apt A	\$145	2	7

INFORMATION & RESERVATIONS:

828-389-8336 ext. 110 info@hintoncenter.org

DISCOUNTS: 10% on lodging for clergy and those serving or who have served in the military. Rates subject to change.